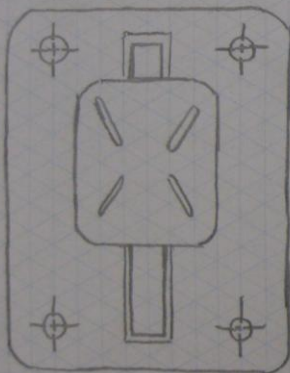
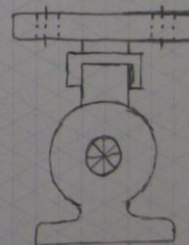


- This angle shows the right-side view of my object. It incorporates a sliding track which holds a chuck in-place with pins. Attached to the chuck is a pivoting, spinning mount for the speaker, held in place with a knob and screw.

IDEA #1



- This front view clearly shows the widths of the mounting brackets and the location of the mounting holes. Also, we can see the horizontal location of the sliding track.

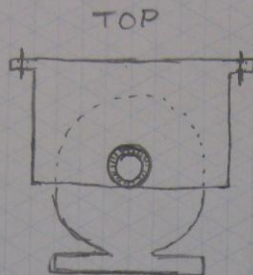
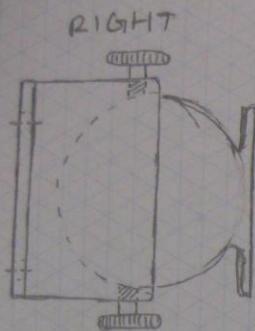


TOP

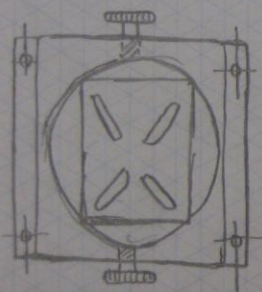
\*NOT TO SCALE

M.P. MORGANTE 5-6-2011

ALVIN No. 1242 8 1/2" x 11" 35°/15° ISOMETRIC



IDEA #2

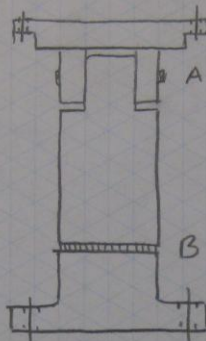
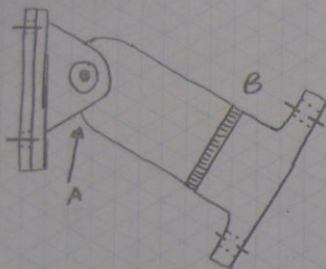


\* THIS design incorporates a large, free-moving sphere. The sphere, or ball, is encased in a box. The box features 2 threaded knobs that lock the sphere in place when tightened. Attached to the ball is a mounting bracket for the speaker.

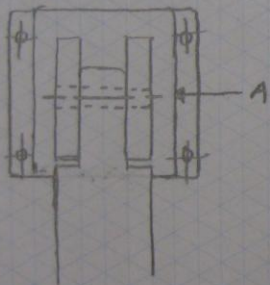
\*NOT TO SCALE

M.P. MORGANTE 5-11-2011

ALVIN No. 1242 8 1/2" x 11" 35°/15° ISOMETRIC



IDEA #3



\* THIS design is a pivoting shaft attached to a solid mount. It rotates vertically at point A, and spins horizontally at point B.

\*NOT TO SCALE

M.P. MORGANTE 5-13-2011